

→ SPACE-SAVING CLAMPING

FOR DIES WITH CLAMPING SLOTS

ROLLBLOC Hollow Piston Clamps HK

Hydraulic operation max. pressure 400 bar

Hydraulic single-acting, with spring return. Connection G 1/4"

Required valve set: Type E

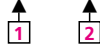
Type list

Type	Clamping force	For T-slot Standard	Option	Order code
HK 06	63 kN	22		HK06W.../22S...
			28	HK06W.../28S...
HK 10	100 kN	28		HK10W.../28S...
			36	HK10W.../36S...
HK 16	160 kN	36		HK16W.../36S...

Project planning dimensions

Cylinder size, mm					Recommended clamping stroke*
Ø D	Ø E	F	G	H	
67	55	26	M 20	92	5 mm
90	78	19	M 24	100	5 mm
			M 30		
116	90	30	M 30	120	5 mm

See below and fold-in flap on left for supplementary order designation



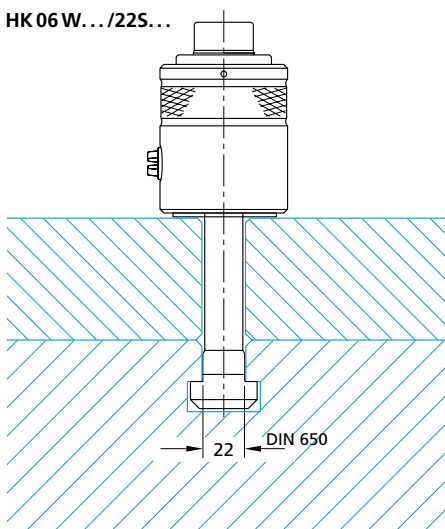
1 (W) Height of die clamping edge as 3-position mm specification, e.g. 086 for 86 mm

2 (S) Shoulder height of T-slot. In view of the standard tolerances in this area, the T-slot in the press table and ram must be measured for ordering hollow piston clamps.

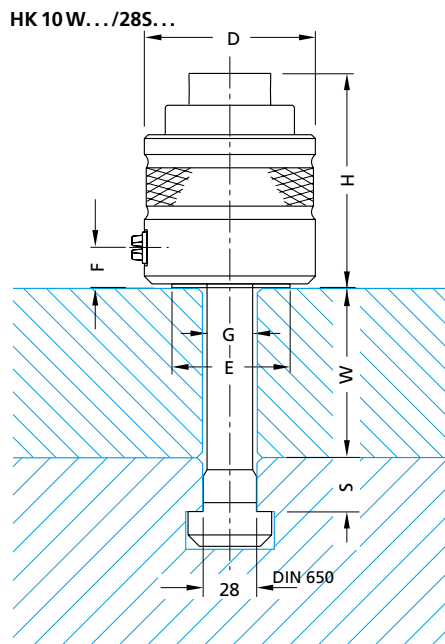
Order code not including mounting screw
Example: HK 06

*Total stroke 8 mm

HK06W.../22S...



HK10W.../28S...



HK16W.../36S...

