



GÜTHLE

ROLLBLOC

→ VARIED APPLICATIONS

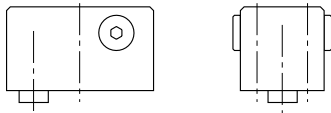
ROLLBLOC Block Clamps BS

Hydraulic operation max. pressure 400 bar.

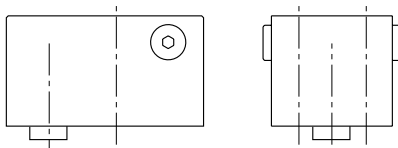
Hydraulic single-acting, with spring return. Connection G 1/4"

Required valve set: Type E

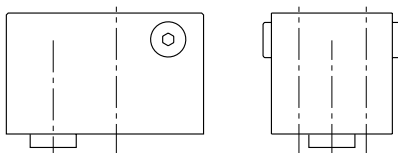
BS 02



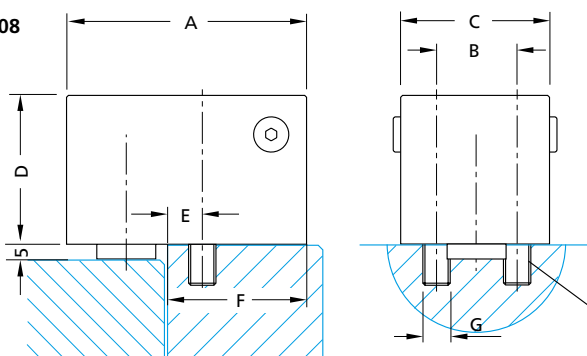
BS 03



BS 05



BS 08



Use screw quality 10.9

Type list

Type	Clamping force	Order code
BS 02	20 kN	BS02
BS 03	32 kN	BS03
BS 05	50 kN	BS05
BS 08	80 kN	BS08

Project planning dimensions

Type	A	B	C	D	E	F	G	Recommended clamping stroke*
BS 02	79	27	45	45	10	50	M10	5
BS 03	105	36	65	50	13	60	M16	5
BS 05	106	36	65	65	13	60	M16	5
BS 08	129	43	80	80	16	73	M20	5

*Total stroke 8 mm

*Shown in clamped position