

# → CLAMPING TECHNOLOGY FOR A SEMI-AUTOMATED SETUP

## ROLLBLOC Wedge Clamps KS

**Hydraulic operation** Pressure max. 350 bar (400 bar\*). The maximum permitted operating force per tensioner must not be exceeded.

Other versions have position detection (2 proximity switches)

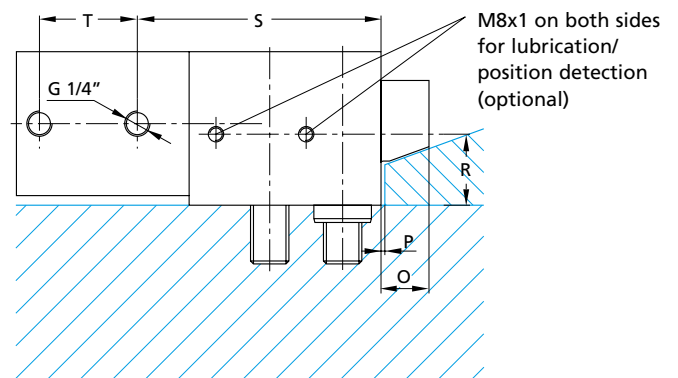
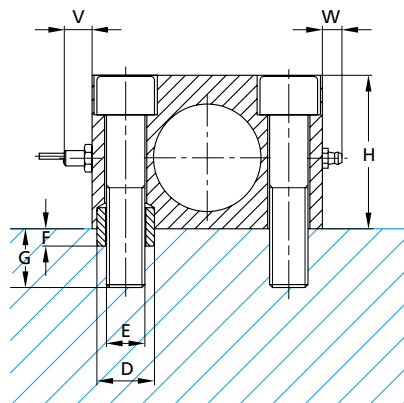
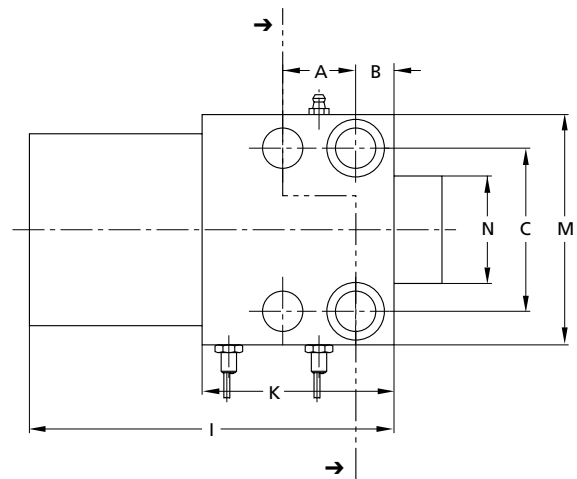
Hydraulic, double-action. Connection G 1/4". Recommended valve set: D or T

### Type list

Type	Clamping force	Operating force, max.	Position sensing		Order code
			with	without	
KS02...	25 kN	36 kN	...B		KS02 B
				...L	KS02 L
KS05...	50 kN	72 kN	...B		KS05 B
				...L	KS05 L
KS10...	100 kN	145 kN	...B		KS10 B
				...L	KS10 L
KS16...	160 kN	230 kN	...B		KS16 B
				...L	KS16 L

### Hole pattern

Type	A	B	C ±0,02	∅ D <sup>H8</sup>	E	F	G
KS02...	24	14	48	18	M12	7	30
KS05...	30	16	65	26	M16	9	40
KS10...	38	20	85	30	M20	11	45
KS16...	50	25	106	35	M24	11	50



\* When attachment screws of 10.9 quality are used, the maximum permitted operating pressure is 400 bar. Prerequisite is a mounting surface with sufficiently stable tappings (at least St 50)