

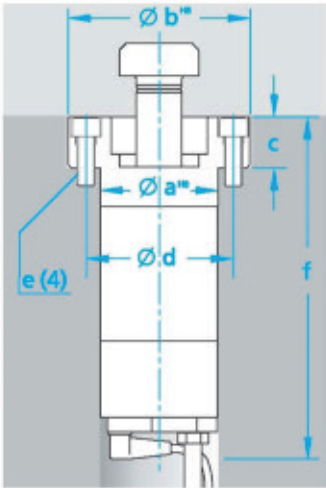
DILOS SWING SINK CLAMPS



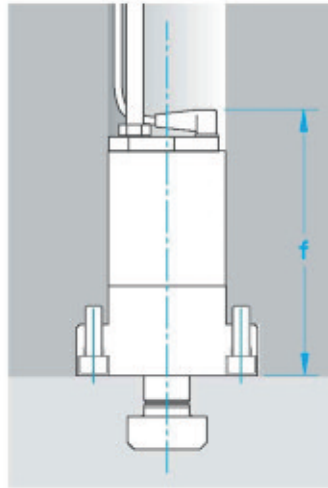
GÜTHLE
IDEA AND SYSTEMS

DILOS

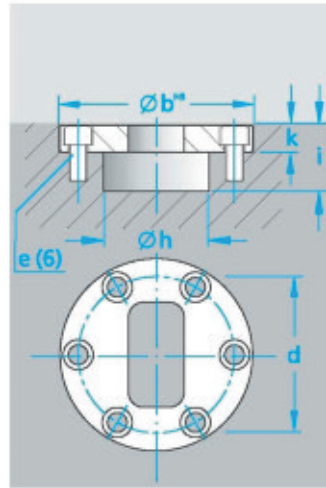
Version A
for press bed and slide



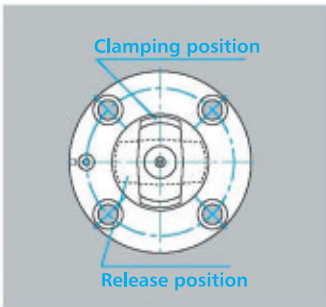
Version B for slide



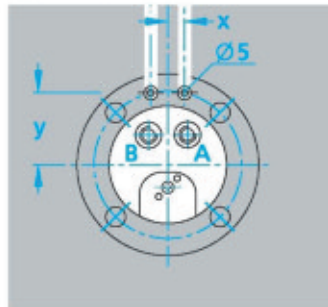
Die flange



Flange side with tie rod



Connection side



Hydraulic connection

The hydraulic connection can either be via pipes/hoses (connection on cover side) or by means of supply lines drilled in the press bed and slide.

Complete service

DILOS stands for DIE LOGISTIC SYSTEM. This die logistic system includes all presses and in-plant die service stations into the rationalisation system for die handling, die maintenance and die storage in press and punching plants.

Upon request, GÜTHLE will supply you with a complete solution – right down to the professional commissioning by our own plant fitters or by a service partner from your local area.

Consulting

The rationalisation effect of this manless clamping technology offers significant user benefits. For optimising the function and expenditure, it is advisable to contact us in the initial stages of your design process. To complement this die clamping technology, we can offer you our wealth of experience in the end-to-end automation of die changing processes.

We can provide you with professional advice – with no obligation on your part.

Technical Details

Type		SZS 61*	SZS 101*	SZS 161*
Clamping force at 400 bar (250 bar)	kN	63 (40)	100 (63)	160 (100)

Connection values

Design type		A	AV	BV	A	AV	BV	A	AV	BV
Oil volume, clamping cycle	cm ³	28	41	27	46	71	41	101	167	70
Oil volume, release cycle	cm ³	77	91	37	161	185	44	442	499	84
Stroke, version 'A'	mm	45	52	12	58	66	12	67	75	13
Swivelling torque	Nm	90			100			120		
Ports A + B		G1/4"			G1/4"			G1/4"		

Installation dimensions - press bed / slide plate

a	Pilot diameter x depth	mm	82 x 20	104 x 40
b	Countersink diameter	mm	128	160
c	Countersink depth	mm	37,5	45,5
d	Pitch Circle	mm	104	130
e	Tapped holes	mm	M12/25 tief	M16/30 tief
f	Installation space x min	mm	280 280 215	300 300 215
				360 360 250

Connection lines / flange connection F

x	Hydraulic supply	mm	15	15
y	Hydraulic supply (drill diameter 5 mm)	mm	50	63
				27,5
				73
h	Pocket diameter, swivelling space	mm	65	80
i	Pocket depth, swivelling space	mm	46 54 52	59 67 65
k	Countersink depth for die flange	mm	18,5	23,5
				28,5

*Full type designation, e.g. SZS 61 ARV-4

Device Type: SZS, Performance class: 61 (101,161) kN,

Version: A, AV, BV (V with square)

Pressure connection: R (pipe), F (Flange, Channels)

Güthle Pressenspannen GmbH

Gottlieb-Haeefe-Strasse 9

73061 Ebersbach

GERMANY

Tel.: +49 7163 99090

Fax: +49 7163 990990

E-mail: tech-info@guethle-swt.de

www.guethle-swt.de