



GÜTHLE

ROLLBLOC

→ COMPACT

HYDRAULIC UNIT

WITH OPTIONAL CONTROL

ROLLBLOC Hydraulic Unit

Operating pressure 400 bar

With intermittent operation

Version depends on delivery rate and effective volume

Technical data Type A...

Delivery rate 1.5 litres/min
 Tank volume 4.0 litre
 Hydraulic oil HLPD 46
 Effective volume 2.0 litre
 Power consumption 0.75 kW
 Voltage 400 V, 50 Hz
 Speed 1360 rpm
 Control voltage 24 V DC

Dimensions

340 x 610 x 630 mm
 (W x D x H)

Equipment

Temperature monitor
 Level monitor
 Pressure limiting valve
 Pressure switch
 Aluminium housing

Technical data Type B...

Delivery rate 1.8 litres/min
 Tank volume 5.0 litre
 Hydraulic oil HLPD 46
 Effective volume 3.0 litre
 Power consumption 1.0 kW
 Voltage 400 V, 50 Hz
 Speed 1370 rpm
 Control voltage 24 V DC

Dimensions

340 x 610 x 630 mm
 (W x D x H)

Equipment

Temperature monitor
 Level monitor
 Pressure limiting valve
 Pressure switch
 Aluminium housing

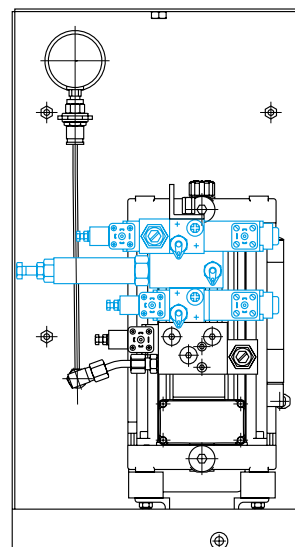
Type list

Hydraulic unit		Electric equipment			Order code
With frame	Without frame	Without electrical system	Wiring to terminal strip	Hydraulic unit control	
AR		S			ARS
			V		ARV
				E	ARE
	AN	S			ANS
			V		ANV
				E	ANE
BR		S			BRS
			V		BRV
				E	BRE
	BN	S			BNS
			V		BNV
				E	BNE

Further units optional

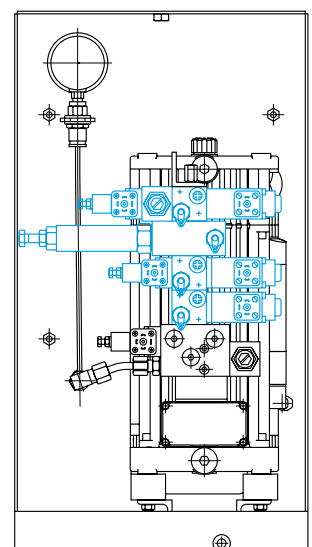
ROLLBLOC hydraulic unit A

Hydraulic unit with frame and control
Order code: ARE

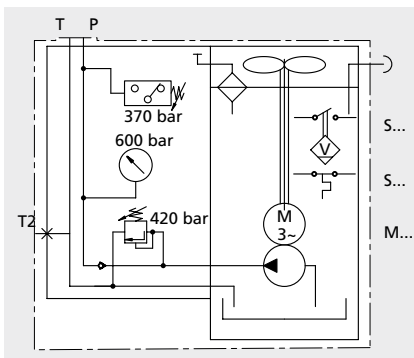


ROLLBLOC hydraulic unit B

Hydraulic unit with frame and control
Order code: BRE



Illustrations, see back



Frame

With oil collection tray
 Mounting facility for terminal box
 Control with control panel

Order example →

