

# → ROLLBLOC TABLE INSERTS

## ROLLBLOC Hardened Strips

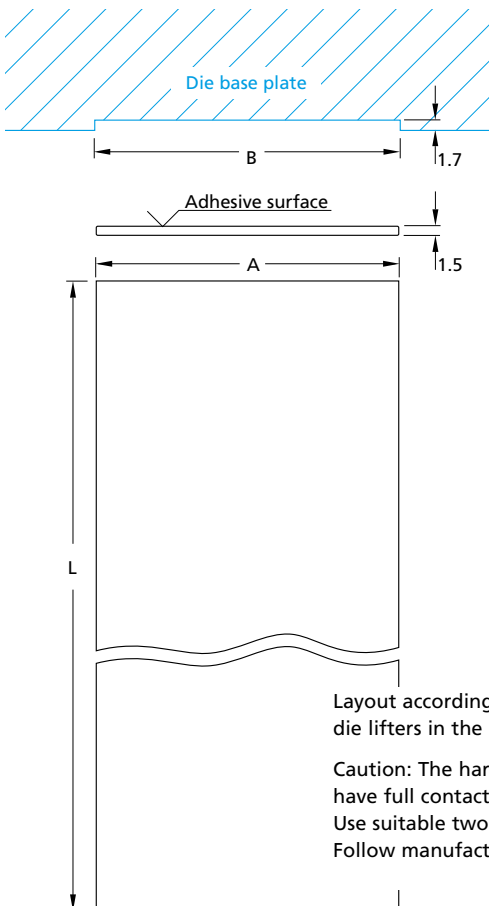
**Hardened** To be glued into the die base plates to reduce rolling friction on the die side  
Supplied in pairs. Length: as requested (max. 2500 mm)

Dimensions			Order code
Hardened strips		Die	
A	L	B	
50 mm	up to 2500	50.5 mm	LF050/0700
80 mm	up to 2500	80.5 mm	LF080/0700

**Type 50 mm (LF05...)**  
for load carrying roller or ball element with defined movement

**Type 80 mm (LF08...)**  
for ROLLBLOC ball version die lifters, without defined guiding of the die

**1** Supplementary order information (length of hardened strips in mm)



Layout according to the ROLLBLOC die lifters in the press bed.

Caution: The hardened strips must have full contact with the base plate. Use suitable two-component adhesive. Follow manufacturer's instructions.

## ROLLBLOC Ball Inserts Order code ...K...

with **spring pressure** Order code ...F...

Load carrying element: Ball  
Die lift  $f = 1.5$  mm



### Ball insert without flange

Type/size	Load bearing capacity	Order code
T 18	0.25 kN	T 18KFG <b>N</b>
T 22	0.40 kN	T 22KFG <b>N</b>
T 28	0.63 kN	T 28KFG <b>N</b>
T 36	1.00 kN	T 36KFG <b>N</b>

**1**

Supplementary order information for possible high temperatures  
**N** = normal temperature max. 80° C  
**H** = high temperature max. 200° C

### Ball insert with flange

Type/size	Load bearing capacity	Order code
T 18	0.25 kN	T 18KFB <b>N</b>
T 22	0.40 kN	T 22KFB <b>N</b>
T 28	0.63 kN	T 28KFB <b>N</b>
T 36	1.00 kN	T 36KFB <b>N</b>

**1**

Supplementary order information for possible high temperatures  
**N** = normal temperature max. 80° C  
**H** = high temperature max. 200° C

**(MATCHING DIE LIFTERS CONFORMING TO DIN 650)**



**ROLLBLOC Roller Inserts** Order code ...W...

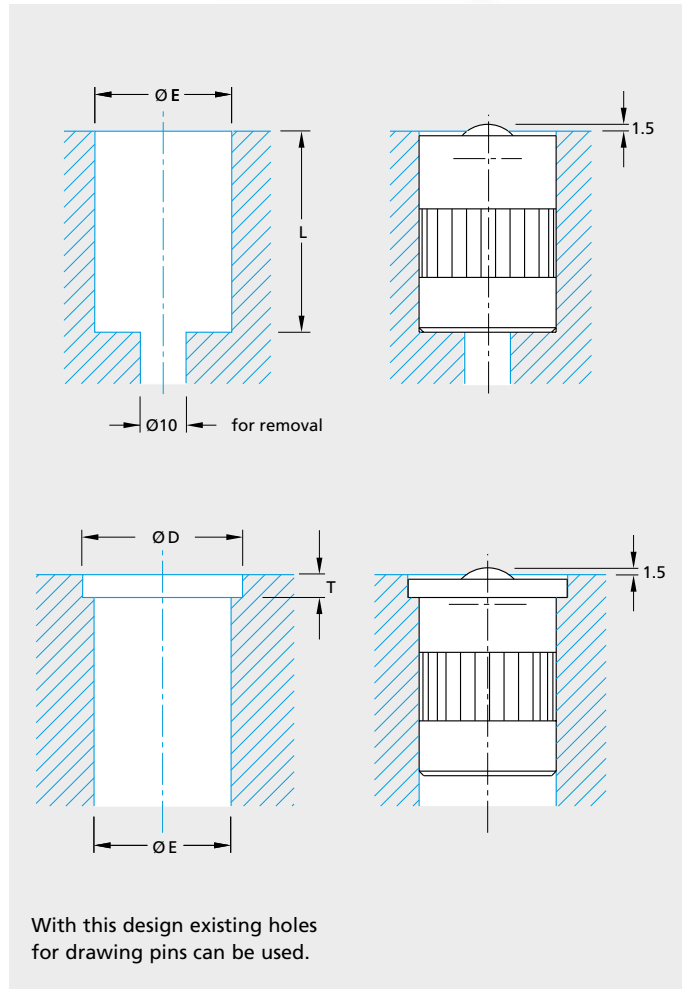
with **spring pressure** Order code ...F...

Load carrying element: Roller

Die lift  $f = 1.5 \text{ mm}$



**Holes for ROLLBLOC table inserts**



**Roller insert without flange**

Type/size	Load bearing capacity	Order code
T18	0.50 kN	T18WFG <b>N</b>
T22	0.80 kN	T22WFG <b>N</b>
T28	1.25 kN	T28WFG <b>N</b>
T36	2.00 kN	T36WFG <b>N</b>



Supplementary order information for possible high temperatures  
**N** = normal temperature max. 80° C  
**H** = high temperature max. 200° C

**Roller insert with flange**

Type/size	Load bearing capacity	Order code
T18	0.50 kN	T18WFB <b>N</b>
T22	0.80 kN	T22WFB <b>N</b>
T28	1.25 kN	T28WFB <b>N</b>
T36	2.00 kN	T36WFB <b>N</b>



Supplementary order information for possible high temperatures  
**N** = normal temperature max. 80° C  
**H** = high temperature max. 200° C

**Dimensions for table holes**

Inserts Type/size	without flange		with flange		
	$\varnothing E^{H9}$	$L^{+0,2}$	$\varnothing E^{H9}$	$\varnothing D^{+0,2}$	$T^{+0,1}$
T18	20	30	20	25	3,5
T22	24	38	24	30	4
T28	30	44	30	35	5
T36	40	53	40	50	6